

**This is NOT a substitute for 911 – if you have any emergency, call 911.**

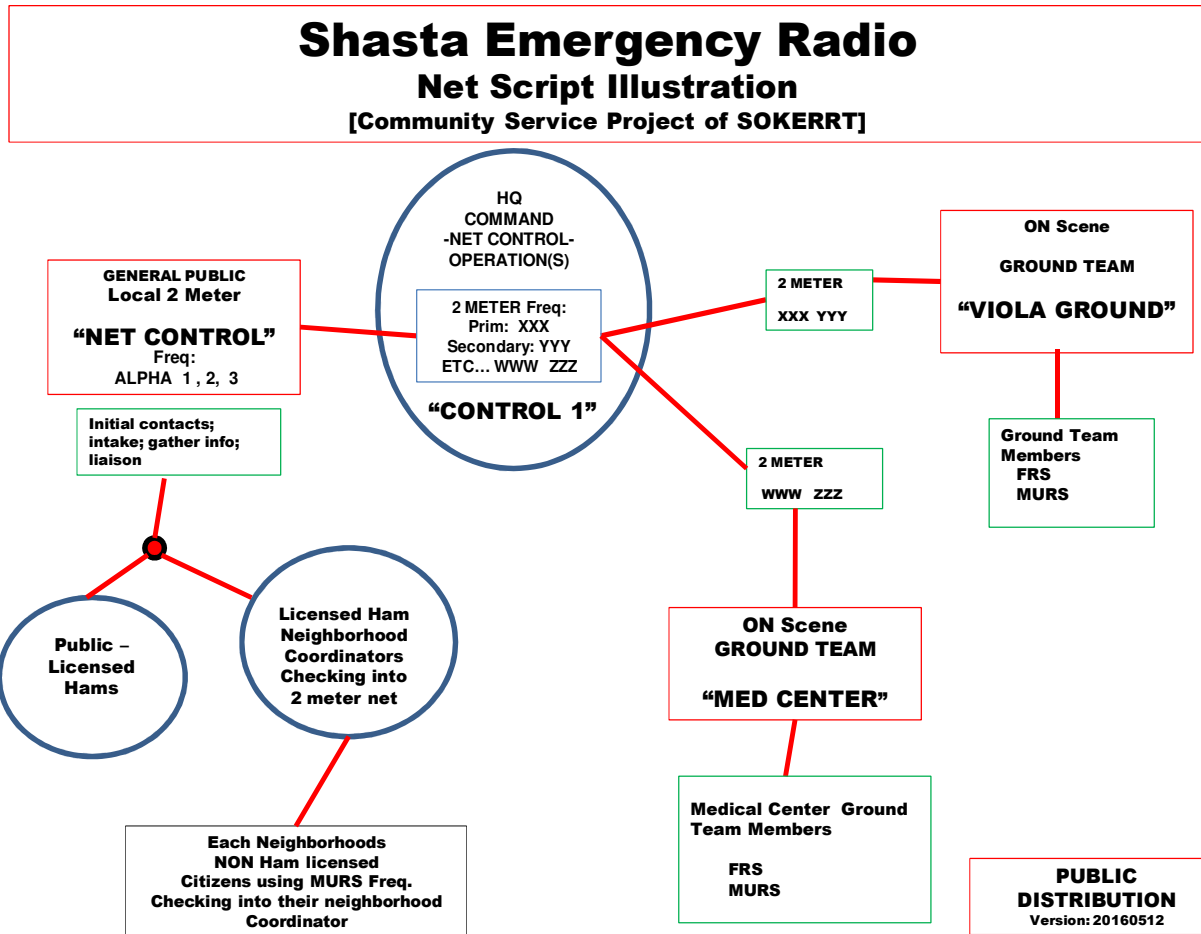
LEVEL 2 – SETTING UP SUBNETS / TEAMS / LEVEL 3 – FIELD TEAMS

(NOTE: SOKERRT TEAM DISPATCH MUST BE APPROVED BY CHAPTER LEADER; FIELD TEAM LEADERS AND FIELD TEAM MEMBERS MUST HAVE PRIOR TRAINING – E.G., MEDICAL, COMMS, SECURITY, ETC... ). OTHER COMMUNITY GROUPS MAY DETERMINE THEIR OWN LEVEL OF TRAINING REQUIREMENTS.

**FORMAT SCRIPT -**

**TRAINING SCRIPT 401- DAMAGE ASSESSMENTS**

OVERVIEW DIAGRAM:



**NOTE: Use FORMAT UNIFORM .**

**NOTE: IF this is a DRILL – be sure and state - “This is a drill – there is no emergency” during exercise. Be sure to announce during exercise.**

**Note: Be sure to identify your station in conformity with FCC rules.**

## <<SITUATION>>

(IF APPLICABLE STATE – “this is a drill”) – during exercise.

DAMAGE ASSESSMENT – TRAINING ILLUSTRATION:

ASSUME: AN EVENT HAPPENED (e.g., EARTH QUAKE).

The GENERAL INFORMATION GATHERING HAS BEEN DONE OR IS STILL IN PROCESS BY “**NET CONTROL**” – USING FORMAT NOVEMBER, BLOCK 1. For illustration, it is assumed that there is potential damage and/or needs for assistance in the VIOLA AREA (e.g., multiple Mike Mike 8 reports – See FORMAT SCRIPT – EARTHQUAKE / EXPLOSION).

During the Information gathering net, it became apparent that Damage Assessment is needed. Thus, another separate Net Control is set up as **CONTROL 1** (on another frequency – simplex) which is HQ (MULTIPLE RADIOS ARE REQUIRED BY HQ – 50 WATT RADIOS WITH GOOD ANTENNAS AND BACK UP POWER SUPPLY).

### **CONTROL 1 (NOTE: THIS is HQ) (CONTROL 1 - MAY REQUIRED MULTIPLE RADIOS AND MULTIPLE OPERATORS)**

and is communicating with (among others) the following:

1. **NET CONTROL:** which is the general public information gathering input NET (using frequencies format November BLOCK 1 (alpha 1, 2, AND/OR 3). NET CONTROL MAY BE CONTINUING TO RECEIVE AND SEND INFORMATION FROM GENERAL PUBLIC – AND WILL BE IN CONTACT WITH HQ (CONTROL 1).
2. **FIELD TEAM(s)** (in this illustration – field teams are in direct comms with HQ) (In other situations, a separate Ground Comms Net may be appropriate). In this illustration the TACTICAL CALL SIGN for one of the FIELD Teams is “**VIOLA GROUND**” – which is /will be conducting a neighborhood assessment for damages in VIOLA AREA]. The field team (minimum 2 person team – with 50 watt radio / mag mount / back up power supply etc) ; and HT’s for each team member). Ground Team is to maintain check ins at least every 15 minutes with CONTROL 1 and Reports back with an area report using FORMAT UNIFORM [Area Drive through – rapid needs / damage assessment]. FREQUENCIES ASSIGNED BY CONTROL 1 (Most likely simplex).

Example of Exchange follows.

**<<START>>**

The Script below is taking place AFTER (or during), the GENERAL INFORMATION GATHERING Net – performed by “**NET CONTROL**” – USING FORMAT NOVEMBER, BLOCK 1.

CONTROL 1: “Net Control, Control 1.”

NET CONTROL: “GO AHEAD”.

CONTROL 1: “WE NEED a 2 person field team to assemble at Highway 44, mileage marker XX at 1000 hours for VIOLA AREA ASSESSMENT – use FORMAT UNIFORM. MUST RESPOND WITH STANDARD EQUIPMENT. Please make a call out.

NET CONTROL: “WILCO. OUT”.

NET CONTROL: “WE NEED a 2 person field team to assemble at Highway 44, mileage marker XX at 1000 hours for VIOLA AREA ASSESSMENT – use FORMAT UNIFORM. MUST RESPOND WITH STANDARD EQUIPMENT. ANY TEAM LEADER STATION PREPARED TO RESPOND PLEASE CALL NOW.” (Team Leaders must meet certain requirements to be Field Team Leader).

A station: “This is [call sign] I will report AS TEAM LEADER”.

NET CONTROL: “ROGER:.”

NET CONTROL: “ANY TEAM MEMBER station prepared to respond, please call now”. (note: Team Members must be certain requirements to be a Field Team Member).

A station: “This is [call sign] I will report AS TEAM MEMBER”.

NET CONTROL: “ROGER”.

CONTROL 1: “NET CONTROL this is CONTROL 1”.

NET CONTROL” “GO AHEAD”.

CONTROL 1: “ NET CONTROL, AND [call signs of teams reporting for ground operation ] THE TACTICAL CALL for the TEAM REPORTING TO VIOLA – IS “VIOLA GROUND”.

Primary Frequency: XXXX

Secondary Frequency: YYYY

Field Teams HTs - use standing Primary and Secondary – QSL? “

CONTROL 1: "NET CONTROL do you copy"?

NET CONTROL: "COPY".

CONTROL 1: "[CALL signs of team leader] – copy?"

VOILA GROUND (TEAM LEADER): "THIS IS VIOLA GROUND – copy".

CONTROL 1: "ROGER"

CONTROL 1: "VIOLA GROUND – REPORT WHEN ARRIVE AT LOCATION".

VIOLA GROUND: "WILCO, OUT"

CONTROL 1: "CONTROL 1 is NOW QSY XXXX. OUT".

**[NET CONTROL MUST NOW BE ON THE FREQUENCY FOR THE GENERAL PUBLIC NET (FORMAT NOVEMBER BLOCK 1 ) AND THE FREQUENCY PLAN FOR CONTROL 1 (THUS, NET CONTROL needs AT LEAST two radios) (ONE RADIO WITH DUAL WATCH IS NOT RECOMMENDED!).**

[VIOLA GROUND ARRIVES AT SCENE].

VIOLA GROUND: "CONTROL 1, THIS IS VIOLA GROUND".

CONTROL 1: "GO AHEAD".

VIOLA GROUND: "TEAM AT LOCATION AND STARTING ASSESSMENT"

CONTROL 1: "ROGER".

[AT 15 MINUTES – CHECK IN TO BE MADE]

VIOLA GROUND: "CONTROL 1, VIOLA GROUND"

CONTROL 1: "GO"

VIOLA GROUND: "NOTHING TO REPORT, CONTINUING ASSESSMENT"

CONTROL 1: "ROGER".

[TIME ELAPSES]

VIOLA GROUND: "CONTROL 1, this is VIOLA GROUND:"

CONTROL 1: "Go ahead".

**VIOLA GROUND: " I HAVE FORMAT UNIFORM REPORT. ARE YOU READY?" [OR "QRV?"]**

**CONTROL 1: "I AM READY" [OR "QRV"]**

**VIOLA GROUND: "This is VIOLA GROUND - REPORT FOLLOWS - FORMAT UNIFORM**

**– PAGE 1, LINE 1"**

**"TIME 1100 HOURS, ,**

**"QTH Deer Flat between X and Y,**

**Column A figures 3 ,**

**Column LIMA, FIGURE 1,**

**Column SIERRA, FIGURE 6,**

**Column TANGO, CHECK, BREAK"**

**"LINE 2**

**QTH ...."**

**[AND SO CONTINUE...]**

**VIOLA GROUND: "CONTROL 1 – REPORT FORMAT NOVEMBER - PAGE 2,**

**LINE 1" [AND SO CONTINUE...]**

**VIOLA GROUND: "End, no more, VIOLA GROUND [your call sign]"**

**CONTROL 1: "ROGER" OR "FORMAT UNIFORM REPORT ACKNOWLEDGED"**

**[CONTROL 1 (HQ) will then determine next step which may include contacting 911, sheriff's office, Cal Fire, Medical Center, (by phone /and or hand delivery of report). Other actions may be necessary]. [This is not a substitute for 911 – if you have an emergency call 911.]**

**Net Control – CLOSING NET:**

**Net Control: "This is (your call sign ) closing the Net at (time) \_\_\_\_\_ hours.**

**This Repeater [or frequency] is now returned to normal operation. (your call sign ) CLEAR."**

**END**